
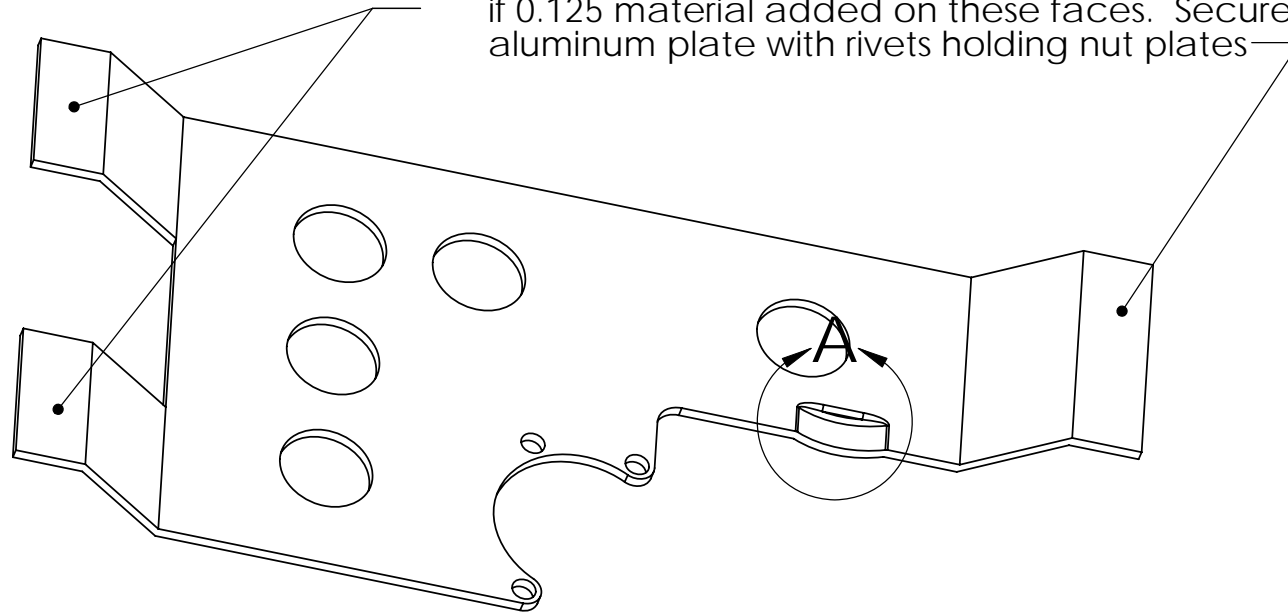


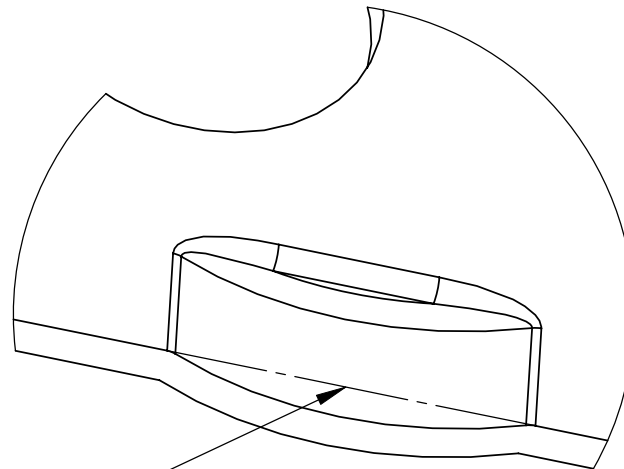
NEXT ASSY.	USED ON	QTY
APPLICATION		

<b>MATCO mfg</b> 2361 S. 1560 West Woods Cross, Utah 84087 USA		NOMENCLATURE WHLW1600XLT-2	PART NUMBER WHLW1600XLT-2		SCALE 1:3	TOLERANCES (EXCEPT AS NOTED)
		MATERIAL VARIES	DRAWING NO. VANS/W1600XLT-2 ON AXLE INSTALL	REVISION B	Est Wt. (lb) 15.78	DO NOT SCALE DRAWING LINEAR .XX = + .03 .XXX = + .01 ANGULAR + 1/2 CONCENTRIC ± .01
DRAWN BY George R. Happ	FINISH	DATE 6/17/2013	CHECKED BY	SHEET 1 OF 2	SHEET SIZE A	

Spacer washers and radial forming not required if 0.125 material added on these faces. Secure fabricated aluminum plate with rivets holding nut plates



DETAIL A  
SCALE 2 : 1



Radially form this area if required for hydraulic fitting clearance when spacer washers used

-	-	1
NEXT ASSY.	USED ON	QTY
APPLICATION		

**MATCO mfg**



2361 S. 1560 West  
Woods Cross, Utah 84087 USA

NOMENCLATURE  
BRACKET, WHEEL PANT

PART NUMBER  
U-1010-L/R

SCALE  
1:2

TOLERANCES  
(EXCEPT AS NOTED)  
DO NOT SCALE DRAWING  
LINEAR .XX = + .03  
.XXX = + .01  
ANGULAR ± 1/2  
CONCENTRIC ± .01

MATERIAL  
-

DRAWING NO.  
VANS/WI600XLT-2 ON AXLE INSTALL

REVISION  
B

Est Wt. (lb)  
0.489

DRAWN BY  
George R. Happ

FINISH  
-

DATE  
6/17/2013

CHECKED BY

SHEET 2 OF 2  
SHEET SIZE A