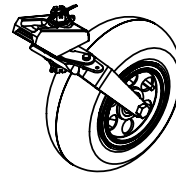
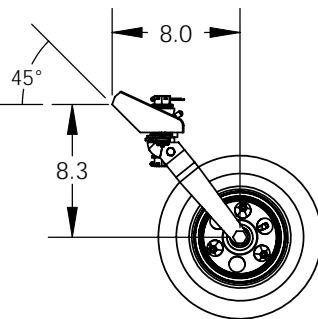
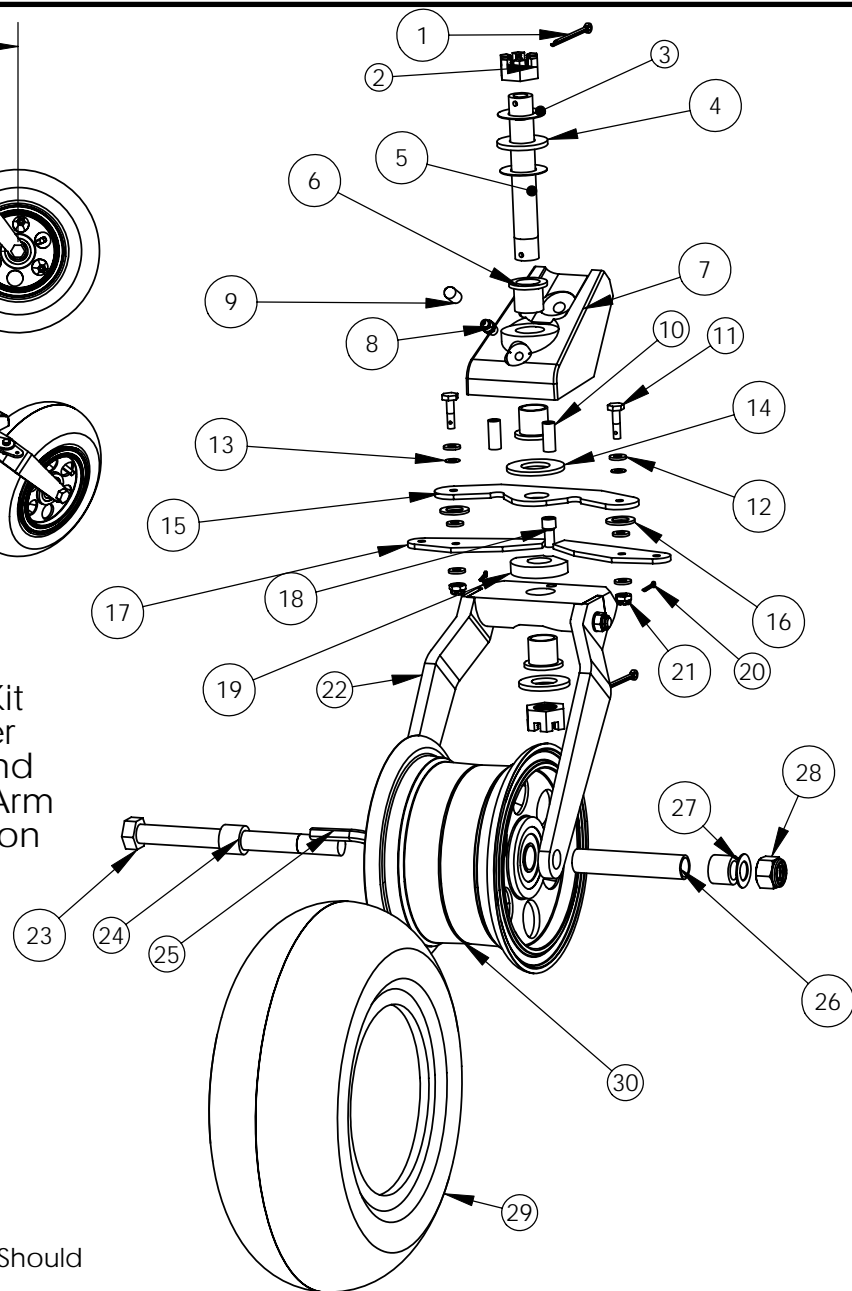


| ITEM # | Part Number | Description | QTY. |
|--------|--------------------|------------------------------|------|
| 1 | MSC.11x1.5COTTERPI | PIN, COTTER ZINC | 2 |
| 2 | MSC.62-18HEXNUT/SL | NUT, HEX SLOTTED | 2 |
| 3 | MSCU321608 | WASHER, BELLEVILLE | 2 |
| 4 | MSC.625SAE | WASHER, 5/8 | 2 |
| 5 | MSC.62-18X4.35(A) | AXLE, VERTICAL TAILWHEEL | 1 |
| 6 | WHLTW-19 | BUSHING, HAT | 3 |
| 7 | WHLTWBL | BASE, TAIL WHEEL | 1 |
| 8 | MSCMC7-4 | FITTING, GREASE | 1 |
| 9 | MSC.234-X.50IL | CAP, DUST | 1 |
| 10 | WHLBSP4 | SPACER, 4"/UL BRAKE | 2 |
| 11 | MSCAN3-6 | BOLT,HEX DRILLED | 2 |
| 12 | MSCAN960-10 | WASHER, AN960 | 6 |
| 13 | MSCB0375-020 | WASHER, BELLEVILLE | 2 |
| 14 | WHLTW-4 | WASHER, BRONZE | 1 |
| 15 | WHLT-02 | ARM, TAIL WHEEL | 1 |
| 16 | MSC.750X.443X.062W | Washer, Nylon | 2 |
| 17 | WHLT-03 | Wing, Tail Wheel | 2 |
| 18 | MSC.25-20x.50SHCS | BOLT, SHCS .25-20X.50 | 1 |
| 19 | WHLTW-21 | BUSHING | 1 |
| 20 | MSC.0625X.50COTTER | PIN, COTTER ZINC | 2 |
| 21 | MSCAN310-3 | NUT, CASTLE | 2 |
| 22 | WHLTWD-10F | ASSEMBLY, FORK 10" | 1 |
| 23 | MSC.50-13X5.75HH | BOLT, HEX | 1 |
| 24 | WHLT10DSL | SPACER, T10D | 2 |
| 25 | TIRTU4.10/3.50-5 | TUBE, 4.10/3.50-5 | 1 |
| 26 | WHLT10SL | SPACER, T10SL | 1 |
| 27 | MSCAN960-816L | WASHER | 1 |
| 28 | MSC.50-13NYLOCK | NUT, NYLOCK | 1 |
| 29 | TIRT10X3.60-5 | TIRE, 10X3.60-5 | 1 |
| 30 | WHLNW50CC | NOSEWHEEL, 5" DIE CAST 0.625 | 1 |



See Part
WHLT-05
Steering Kit
for Rudder
Springs and
Steering Arm
Connection



Note: Alternate Wing Available to Provide Earlier Steering Release.

Release with Standard WHLT-03 = +- 45 Deg

Release with Optional WHLT-03A = +-25 Deg (May be Hand

Ground to Release from 25 to 50 Deg)

TO SET PRELOAD IN VERTICAL AXLE #5: Be certain #3 Springs Are

Installed. Seat Lower Nut #2 Fully & Insert Cotter Pin #1. Tighten Upper Nut #2

Slowly Until All Freeplay of Springs are removed and Fork #22 No Longer Rotates

Freely. Loosen Upper Nut #2 1-4 Locking Features and Install Cotter Pin #1. Fork Should

Rotate With Resistance Around Complete Rotation.

MATCO mfg



2361 S 1560 West
Woods Cross, UT 84087 USA

NOMENCLATURE
TAILWHEEL, 10" DUAL FORK

PART NUMBER
WHLT-10D

SCALE
1:5

TOLERANCES
(EXCEPT AS NOTED)

DRAWN BY
George R. Happ

FINISH

DATE
11/30/2006

DRAWING NO.
TAIL/3D-T-11D

REVISION
A

Est Wt. (lb)
9.63

DO NOT SCALE DRAWING

LINEAR .XX = + .03

.XXX = + .01

ANGULAR ± 1/2

CONCENTRIC ± .01

CHECKED BY

SHEET 1 OF 1

SHEET SIZE A