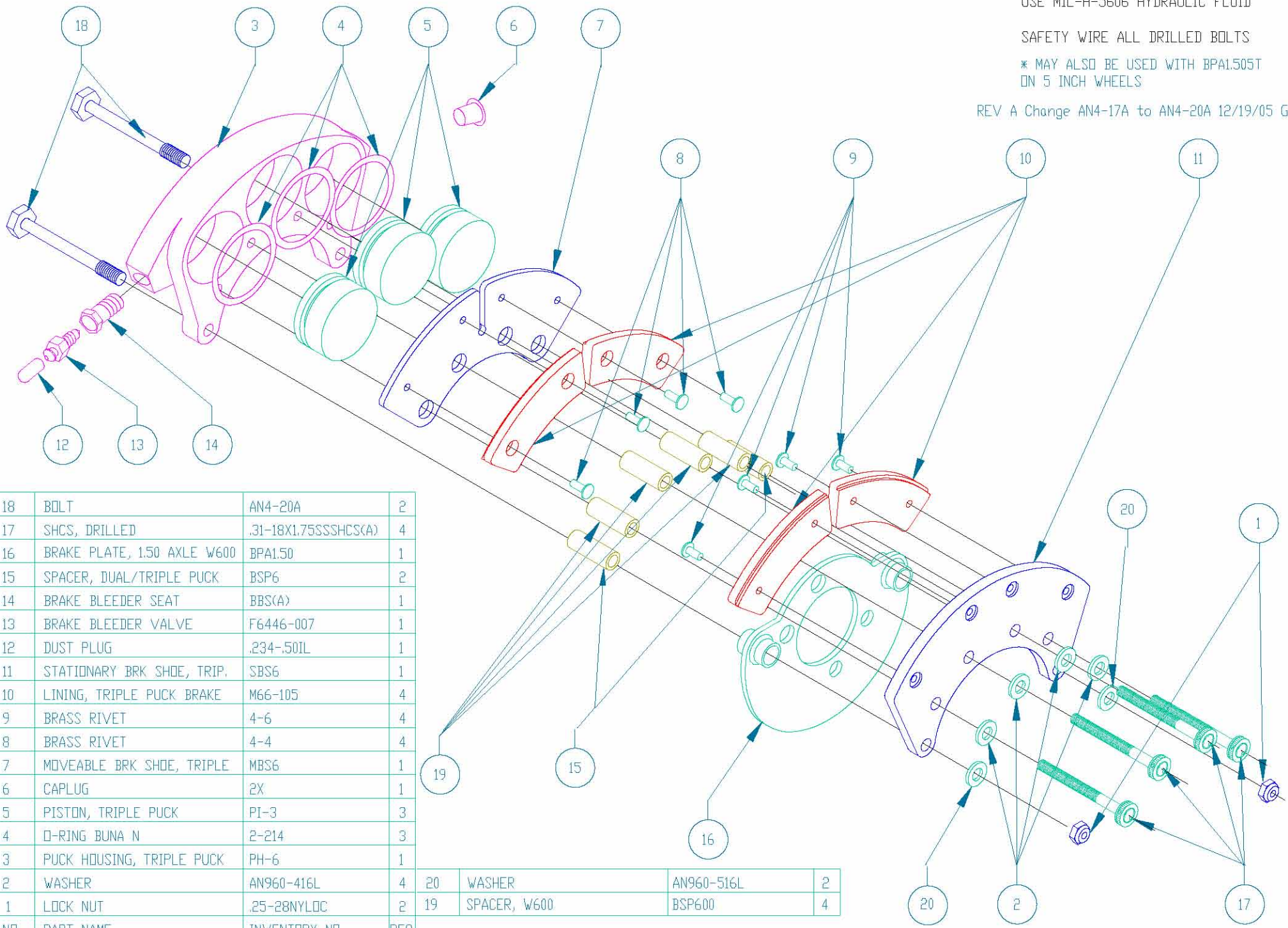


USE MIL-H-5606 HYDRAULIC FLUID

SAFETY WIRE ALL DRILLED BOLTS

* MAY ALSO BE USED WITH BPA1.505T
ON 5 INCH WHEELS

REV A Change AN4-17A to AN4-20A 12/19/05 GRH



18	BOLT	AN4-20A	2
17	SHCS, DRILLED	.31-18X1.75SSSHCS(A)	4
16	BRAKE PLATE, 1.50 AXLE W600	BPA1.50	1
15	SPACER, DUAL/TRIPLE PUCK	BSP6	2
14	BRAKE BLEEDER SEAT	BBS(A)	1
13	BRAKE BLEEDER VALVE	F6446-007	1
12	DUST PLUG	.234-.50IL	1
11	STATIONARY BRK SHOE, TRIP.	SBS6	1
10	LINING, TRIPLE PUCK BRAKE	M66-105	4
9	BRASS RIVET	4-6	4
8	BRASS RIVET	4-4	4
7	MOVEABLE BRK SHOE, TRIPLE	MBS6	1
6	CAPLUG	2X	1
5	PISTON, TRIPLE PUCK	PI-3	3
4	O-RING BUNA N	2-214	3
3	PUCK HOUSING, TRIPLE PUCK	PH-6	1
2	WASHER	AN960-416L	4
1	LOCK NUT	.25-28NYLOC	2
NO.	PART NAME	INVENTORY NO.	REQ

20	WASHER	AN960-516L	2
19	SPACER, W600	BSP600	4

3D-600-B
REV A
MATCO mfg
2361 S 1560 West
WOODS CROSS, UT 84087 (801) 335-0582

TRIPLE PUCK BRAKE ASSEMBLY
USING PH-6 CALIPER (1.25" PISTONS)

DRAWN BY: GARY P. LANGFORD
CHECKED BY:

SCALE: NONE
DATE: MAY 23, 2002

1 OF 1