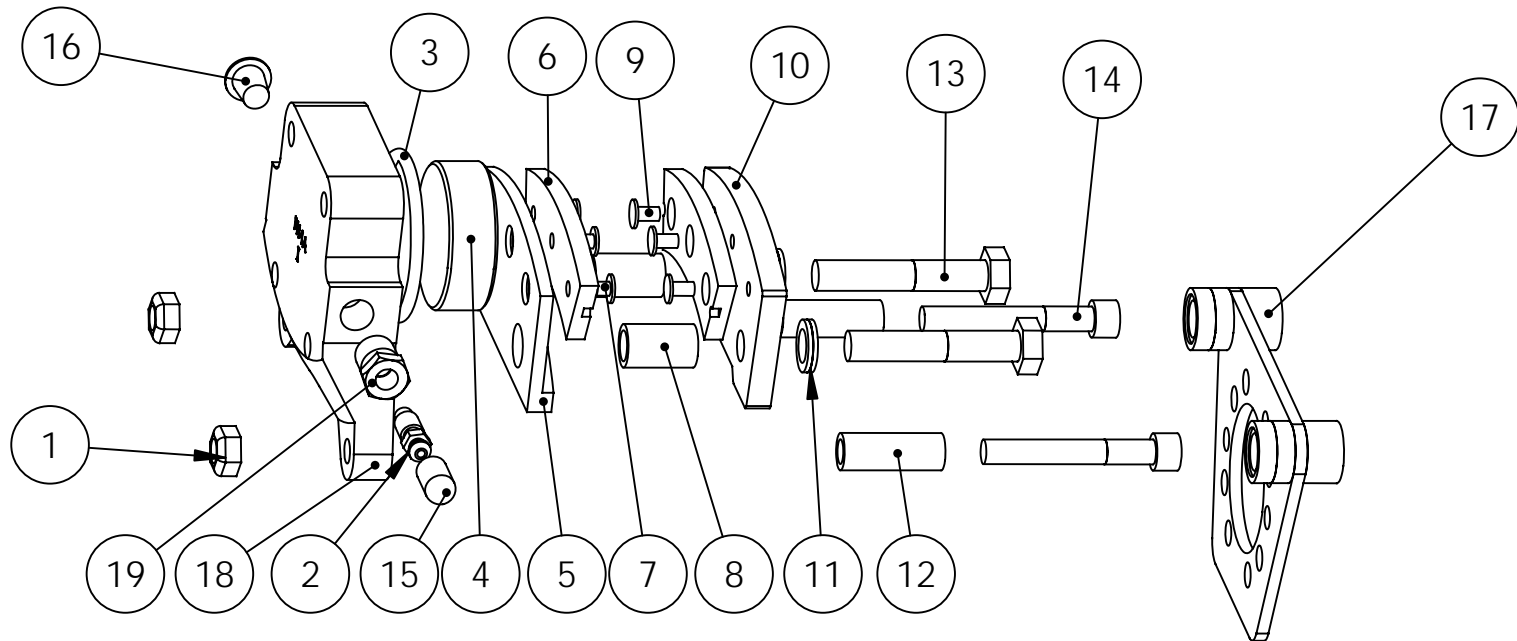
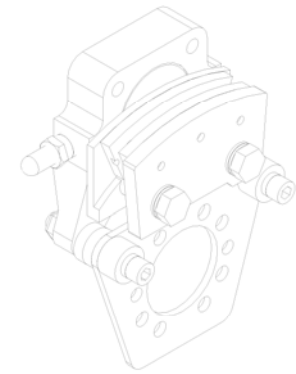


| ITEM # | Part Number | Description | QTY |
|--------|----------------------|---------------------------------|-----|
| 1 | MSC.25-20CRLOCK | NUT, CRLOCK | 2 |
| 2 | MSCF6446-007 | VALVE, BLEEDER | 1 |
| 3 | MSC2-222 | O-RING, BUNA -N | 1 |
| 4 | WHLPI-1 | PISTON | 1 |
| 5 | WHLMBSI5 | PLATE, I SERIES MOVEABLE BRAKE | 1 |
| 6 | WHLM66-106 | LINING, BRAKE M66-106 | 2 |
| 7 | MSC4-4 | RIVET, SEMI-TUBULAR | 3 |
| 8 | WHLBSPi600 | SPACER, STAINLESS TUBULAR | 2 |
| 9 | MSC4-6 | RIVET, SEMI-TUBULAR | 3 |
| 10 | WHLBSI5 | SHOE, STATIONARY BRAKE I SERIES | 1 |
| 11 | MSCNL8 | WASHER SET, NORLOC | 2 |
| 12 | WHLBSP6 | SPACER, STAINLESS TUBULAR | 2 |
| 13 | MSC.31-18X1.75HHBOLT | BOLT, HEX | 2 |
| 14 | MSC.25-20X1.75HCS | SCREW, SOCKET HEAD | 2 |
| 15 | MISC.234-X.50IL | CAP, DUST | 1 |
| 16 | MSC2X | PLUG, CAP | 1 |
| 17 | WHLBPAE1.38CT | PLATE, BRAKE 'E' SERIES | 1 |
| 18 | WHLPH-1AI | HOUSING, CALIPER PH-1AI | 1 |
| 19 | MSCBBS(A) | SEAT, BRAKE BLEEDER | 1 |



MATCO mfg

2361 S 1560 West
Woods Cross, UT 84087 USA



NOMENCLATURE
ASSY, BRAKE 5" I SERIES w/BPAE1.38CT

PART NUMBER
WHLBI5-1

SCALE
1:2

MATERIAL
VARIES

DRAWING NO.
BRAKE/3D-BI5

REVISION
NC

Est Wt. (lb)
1.22

DRAWN BY
George R. Happ

FINISH

DATE
4/21/2008

CHECKED BY

SHEET 2 OF 3
SHEET SIZE A

TOLERANCES
(EXCEPT AS NOTED)
DO NOT SCALE DRAWING
LINEAR .XX = ± .03
.XXX = ± .01
ANGULAR ± 1/2
CONCENTRIC ± .01