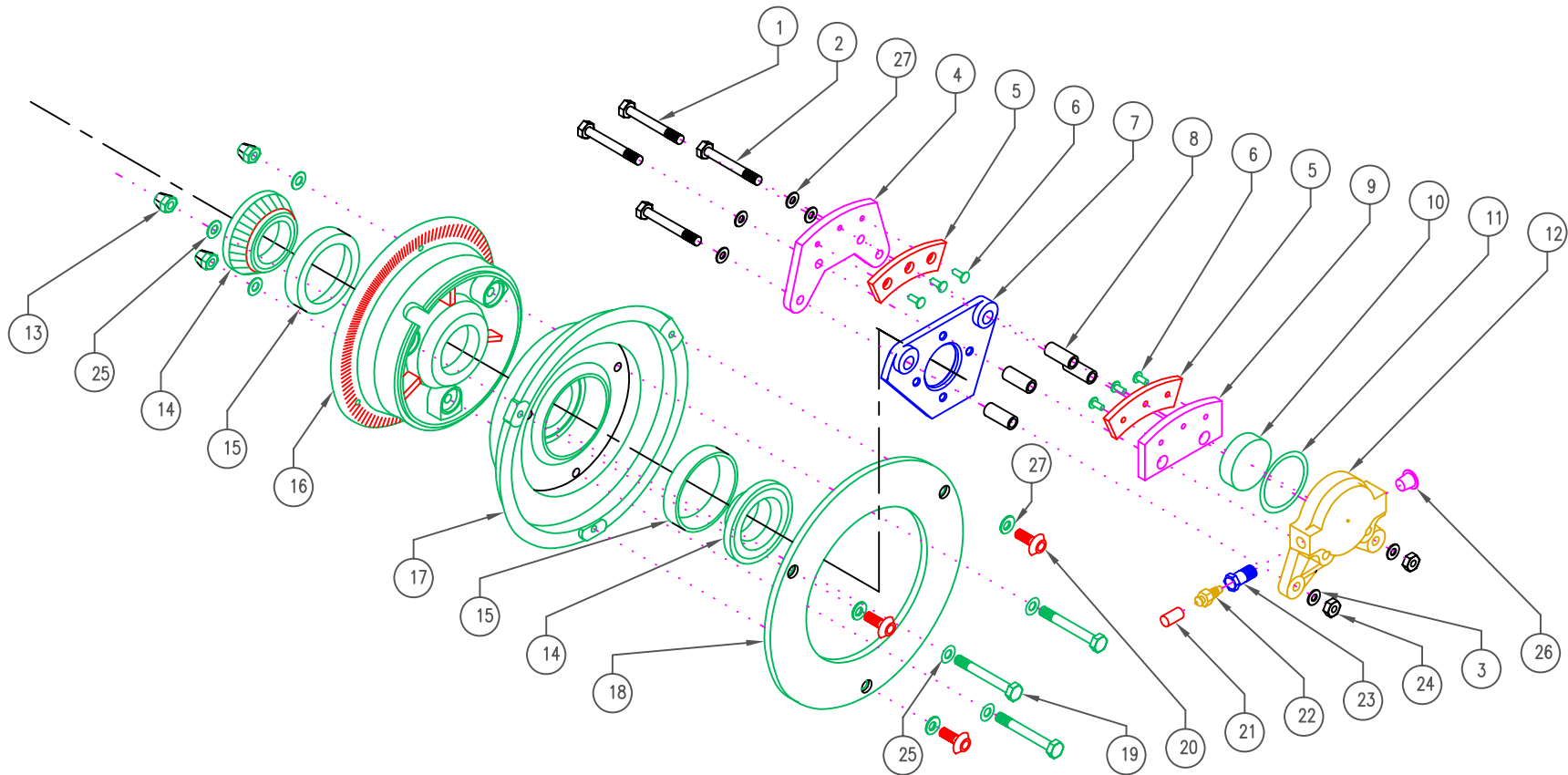


REV A CORRECT PART LIST TO BOM 8/02/02 AWH  
 REV B CORRECT TO BHCS AND NL WASHER 07/10/12 GRH



NO.	PART NAME	INVENTORY NO.	REQ'S	NO.	PART NAME	INVENTORY NO.	REQ'S	NO.	PART NAME	INVENTORY NO.	REQ'S
1	BOLT, HEXHEAD	.25-20X2HH	2	11	O-RING BUNA N	2-222	1	20	BHCS, DRILLED	.25-20X.62BHCS	3
2	BOLT	AN4-20A	2	12	PUCK HOUSING, 5/6" BRAKE	PH-1	1	21	DUST PLUG	.234-.50IL	1
3	WASHER	AN960-416L	6	13	FLEX LOCK NUT, .25-28 (TORQUE 50 IN. LBS.)	AN363-428	3	22	BRAKE BLEEDER VALVE	F6446-007	1
4	STATIONARY BRK SHOE, 5/6" BRK	SBS5	1	14	ROLLER BEARING, 1.25	LM6700LA	2	23	BRAKE BLEEDER SEAT	BBS(A)	1
5	LINING, 5/6" BRAKE	M66-106	2	15	BEARING RACE, 1.25	LM67010	2	24	LOCK NUT (TORQUE TO 50 IN. LBS.)	.25-28NYLOC	2
6	BRASS RIVET	4-6	6	16	VALVE HALF, W60, 1.25 BRNG	W60/1.25	1	25	WASHER	AN960-416	6
7	BRAKE PLATE, 1.38 AXLE	BPA1.38	1	17	BRAKE HALF, W60, 1.25 BRNG	B60/1.25	1	26	CAPLUG	2X	1
8	SPACER, 5/6" BRAKE	BSP5	4	18	BRAKE DISC, 5/6" BRAKE	D5	1	27	WASHER, NORDLOC	NL1/4	5
9	MOVEABLE BRAKE SHOE, 5/6" BRAKE	MBS5	1	19	BOLT	AN4-16A	3				
10	PISTON, 5/6" BRAKE	PI-1	1								

3D-WH60

**MATCO mfg**  
 2361 S 1560 West  
 WOODS CROSS, UT 84087 (801) 335-0582

**W60**

DRAWN BY: GARY P. LANGFORD  
 CHECKED BY:

SCALE: NONE  
 DATE: SEPTEMBER 19, 1991

1 OF 1