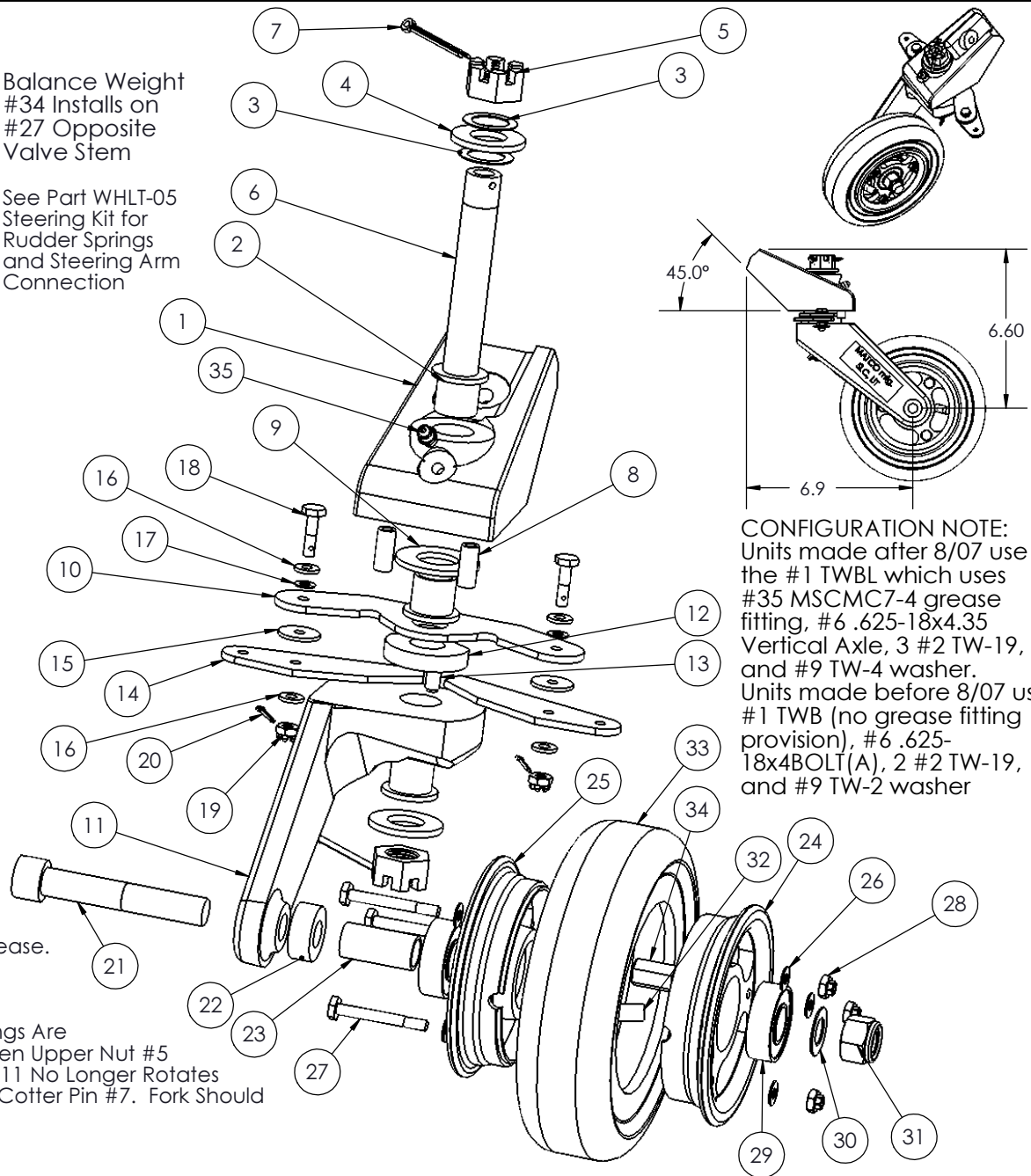


ITEM #	Part Number	Description	QTY.
1	See Config Note	BASE, TAIL WHEEL	1
2	See Config Note	BUSHING, HAT	3
3	MSCU625-0210	WASHER, CURVED	2
4	MSC.625SAE	WASHER, 5/8	2
5	MSC.62-18HEXNUT/SL	NUT, HEX SLOTTED	2
6	See Config Note	AXLE, VERTICAL TAILWHEEL	1
7	MSC.11x1.5COTTERPI	PIN, COTTER ZINC	2
8	WHLBSP4	SPACER, 4"/UL BRAKE	2
9	See Config Note	WASHER, BRONZE	1
10	WHLT-02	ARM, TAIL WHEEL FORK, 6" TAIL	1
11	WHLTW-6F	WHEEL	1
12	WHLTW-21	BUSHING	1
13	MSC.25-20x.50SHCS	BOLT, SHCS .25-20X.50	1
14	WHLT-03	Wing, Tail Wheel	2
15	MSC.750x.190x.062W	WASHER, BRONZE	2
16	MSCAN960-10	WASHER, THICK	4
17	MSCB0375-020	WASHER, BELLEVILLE	2
18	MSCAN3-6	BOLT, HEX DRILLED	2
19	MSCAN310-3	NUT, CASTLE	2
20	MSC.0625X.50COTTER	PIN, COTTER ZINC	2
21	MSC.50-13X3.0SHCS(A)	BOLT, SHCS .50-13x3.0 PLATED	1
22	WHLTW-3	SPACER, TAIL WHEEL	1
23	WHLT6SL	SLEEVE, TAIL T-6P	1
24	WHLW35/.625	WHEEL HALF, TAIL VALVE	1
25	WHLTW35/.625	WHEEL HALF, TAIL BACK	1
26	MSCAN960-10L	WASHER, THIN	6
27	MSCAN3-15A	BOLT, HEX	3
28	MSCMS21045-3	NUT, FLEX LOCK	3
29	MSC1623DCTN	Bearing, Ball 0.625	2
30	MSCAN960-816L	WASHER	1
31	MSC.50-13NYLOCK	NUT, NYLOCK	1
32	TIRTU7x1.75	TUBE, 7x1.75	1
33	TIRT6X2	TIRE, 6X2	1
34	TW35WGT	WEIGHT, BALANCE	2
35	MSCMC7-4	FITTING, GREASE	1

Balance Weight #34 Installs on #27 Opposite Valve Stem

See Part WHLT-05 Steering Kit for Rudder Springs and Steering Arm Connection



CONFIGURATION NOTE:
Units made after 8/07 use the #1 TWBL which uses #35 MSCMC7-4 grease fitting, #6 .625-18x4.35 Vertical Axle, 3 #2 TW-19, and #9 TW-4 washer. Units made before 8/07 use #1 TWB (no grease fitting provision), #6 .625-18x4BOLT(A), 2 #2 TW-19, and #9 TW-2 washer

Note: Alternate Wing Available to Provide Earlier Steering Release. Release with Standard WHLT-03 = +- 45 Deg Release with Optional WHLT-03A = +-25 Deg (May be Hand Ground to Release from 25 to 50 Deg)

TO SET PRELOAD IN VERTICAL AXLE #6: Be certain #3 Springs Are Installed. Seat Lower Nut #5 Fully & Insert Cotter Pin #7. Tighten Upper Nut #5 Slowly Until All Freeplay of Springs #3 are removed and Fork #11 No Longer Rotates Freely. Loosen Upper Nut #5 2-3 Locking Features and Install Cotter Pin #7. Fork Should Rotate Freely Around Complete Rotation.

MATCO mfg



2361 S 1560 WEST
Woods Cross, UT 84087

NOMENCLATURE
TAIL WHEEL, 6" PNEUMATIC

MATERIAL
VARIOUS

PART NUMBER
WHLT-6P

DRAWING NO.
TAIL/3D-T6P

CHECKED BY

SCALE
1:4

REVISION
A

Est Wt. (lb)
5.01

TOLERANCES
(EXCEPT AS NOTED)

DO NOT SCALE DRAWING

LINEAR .XX = + .03

.XXX = + .01

ANGULAR + 1/2

CONCENTRIC + .01

DRAWN BY
George R. Happ

FINISH
VARIES

DATE
6/15/2015

SHEET 1 OF 1
SHEET SIZE A