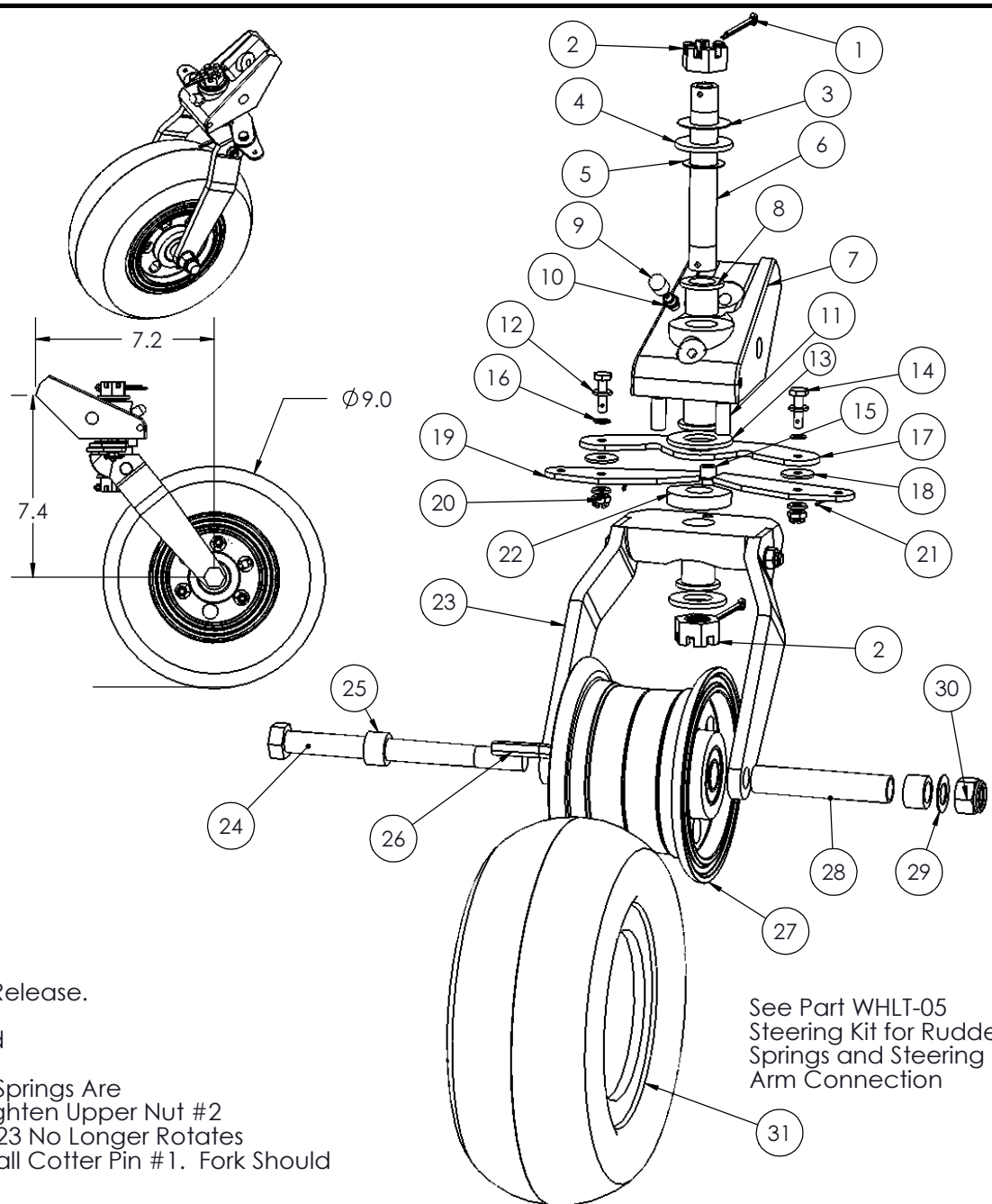


| ITEM # | Part Number | Description | QTY. |
|--------|--------------------|--------------------------------|------|
| 1 | MSC.11x1.5COTTERPI | PIN, COTTER ZINC | 2 |
| 2 | MSC.62-18HEXNUT/SL | NUT, HEX SLOTTED | 2 |
| 3 | MSCU321608 | WASHER, BELLEVILLE | 1 |
| 4 | MSC.625SAE | WASHER, 5/8 | 2 |
| 5 | MSCU625-0210 | WASHER, CURVED | 1 |
| 6 | MSC.62-18X4.35(A) | AXLE, VERTICAL TAILWHEEL | 1 |
| 7 | WHLTWBE1.5 | BASE, TAIL WHEEL | 1 |
| 8 | WHLTW-19 | BUSHING, HAT | 3 |
| 9 | MSCVC-250-8 | COVER, BLEEDER BLK | 1 |
| 10 | MSCMC7-4 | FITTING, GREASE | 1 |
| 11 | WHLBSP4 | SPACER, 4"/UL BRAKE | 2 |
| 12 | MSCAN960-10 | WASHER, AN960 | 4 |
| 13 | WHLTW-4 | WASHER, BRONZE | 1 |
| 14 | MSCAN3-6 | BOLT, HEX DRILLED | 2 |
| 15 | MSC.25-20x.50SHCS | BOLT, SHCS .25-20X.50 | 1 |
| 16 | MSCB0375-020 | WASHER, BELLEVILLE | 2 |
| 17 | WHLT-02 | ARM, TAIL WHEEL | 1 |
| 18 | MSC.750x.190x.062W | WASHER, BRONZE | 2 |
| 19 | WHLT-03 | Wing, Tail Wheel | 2 |
| 20 | MSCAN310-3 | NUT, CASTLE | 2 |
| 21 | MSC.0625X.50COTTER | PIN, COTTER ZINC | 2 |
| 22 | WHLTW-21 | BUSHING | 1 |
| 23 | WHLTWD-8WF | ASSEMBLY, DUAL FORK 8" WIDE | 1 |
| 24 | MSC.50-13X5.75HH | BOLT, HEX | 1 |
| 25 | WHLT8DSL | SPACER, T8D | 2 |
| 26 | TIRTU3.00-4 | TUBE, 3.00-4 | 1 |
| 27 | NW40EE | NOSEWHEEL 4" .62 BRG | 1 |
| 28 | WHLT8SLL | SPACER, T8SLL | 1 |
| 29 | MSCAN960-816L | WASHER | 1 |
| 30 | MSC.50-13NYLOCK | NUT, NYLOCK | 1 |
| 31 | TIRT9X3.50-4 | TIRE, 9X3.50-4 | 1 |



Note: Alternate Wing Available to Provide Earlier Steering Release.

Release with Standard WHLT-03 = +/- 45 Deg

Release with Optional WHLT-03A = +/- 25 Deg (May be Hand

Ground to Release from 25 to 50 Deg)

TO SET PRELOAD IN VERTICAL AXLE #6: Be certain #3 & #5 Springs Are

Installed. Seat Lower Nut #2 Fully & Insert Cotter Pin #1. Tighten Upper Nut #2

Slowly Until All Freeplay of Springs are removed and Fork #23 No Longer Rotates

Freely. Loosen Upper Nut #2 1-4 Locking Features and Install Cotter Pin #1. Fork Should

Rotate With Resistance Around Complete Rotation.

See Part WHLT-05
Steering Kit for Rudder
Springs and Steering
Arm Connection

MATCO mfg



2361 S 1560 West
Woods Cross, UT 84087

NOMENCLATURE
TAILWHEEL, 8" DUAL FORK WIDE

PART NUMBER
WHLT-8WD

SCALE
1:4

TOLERANCES
(EXCEPT AS NOTED)

DRAWN BY
George R. Happ

FINISH

DATE
3/1/2011

DRAWING NO.
TAIL/3D-T8WD

REVISION
A

Est Wt. (lb)
8.52

DO NOT SCALE DRAWING

LINEAR .XX = + .03

.XXX = + .01

ANGULAR + 1/2

CONCENTRIC + .01

CHECKED BY

SHEET 1 OF 1

SHEET SIZE A