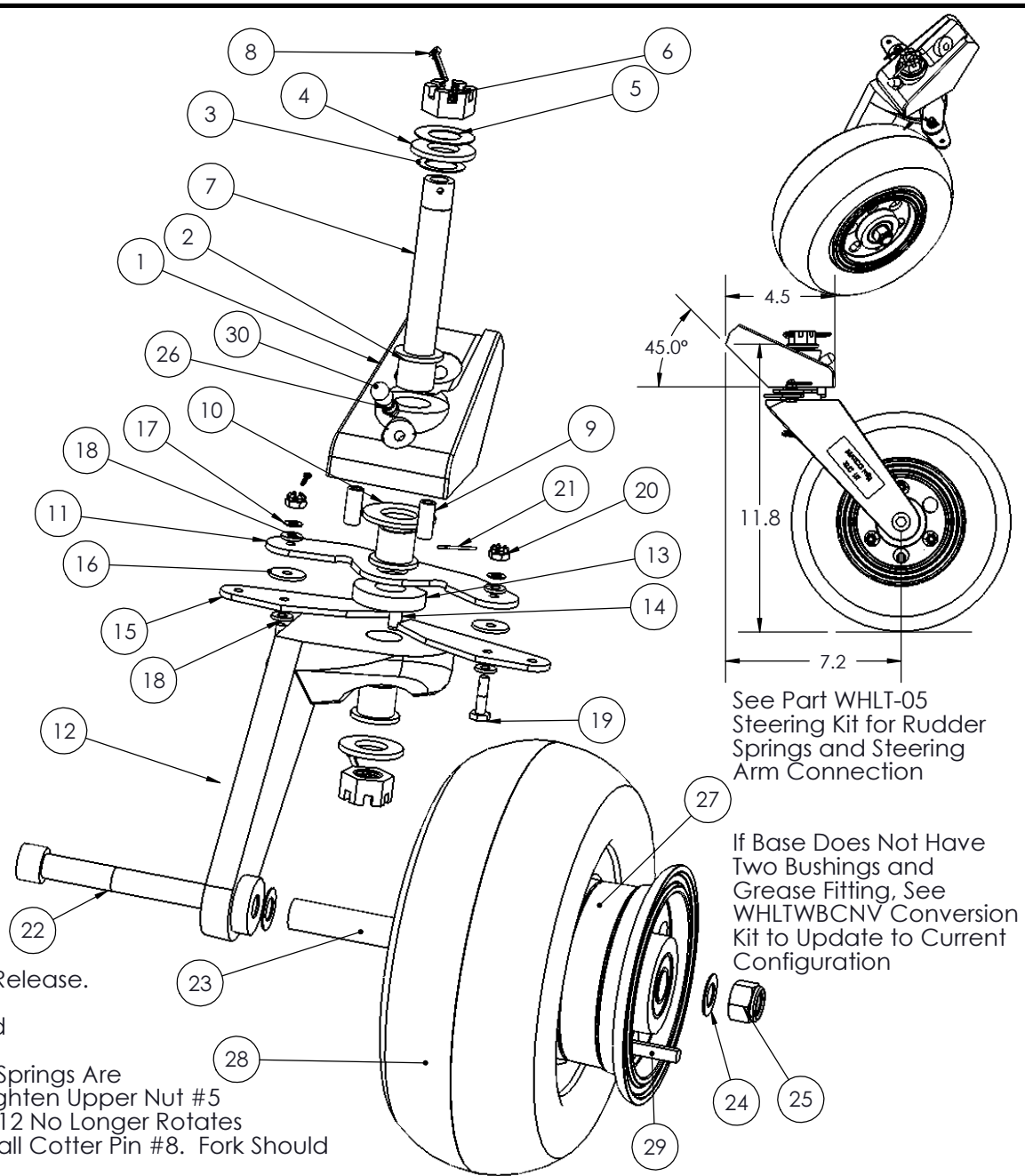


ITEM #	Part Number	Description	QTY.
1	WHLTWBL	BASE, TAIL WHEEL	1
2	WHLTW-19	BUSHING, HAT	3
3	MSCU625-0210	WASHER, CURVED	1
4	MSC.625SAE	WASHER, 5/8	2
5	MSCU321608	WASHER, BELLEVILLE	1
6	MSC.62-18HEXNUT/SL	NUT, HEX SLOTTED	2
7	MSC.62-18X4.35(A)	AXLE, VERTICAL TAILWHEEL	1
8	MSC.11x1.5COTTERPI	PIN, COTTER ZINC	2
9	WHLBSP4	SPACER, 4"/UL BRAKE	2
10	WHLTW-4	WASHER, BRONZE	1
11	WHLT-02	ARM, TAIL WHEEL	1
12	WHLTW-8F	FORK, CANTILEVER 8"	1
13	WHLTW-21	BUSHING	1
14	MSC.25-20x.50SHCS	BOLT, SHCS .25-20X.50	1
15	WHLT-03	Wing, Tail Wheel	2
16	MSC.750x.190x.062W	WASHER, BRONZE	2
17	MSCB0375-020	WASHER, BELLEVILLE	2
18	MSCAN960-10	WASHER, THICK	4
19	MSCAN3-6	BOLT, HEX DRILLED	2
20	MSCAN310-3	NUT, CASTLE	2
21	MSC.0625X.50COTTER	PIN, COTTER ZINC	2
22	MSC.50-13x4.50SHCS	SCREW, SOCKET HEAD	1
23	WHLT8SLL	SPACER, T8SLL	1
24	MSCAN960-816L	WASHER	2
25	MSC.50-13NYLOCK	NUT, NYLOCK	1
26	MSCMC7-4	FITTING, GREASE	1
27	NW40EE	NOSEWHEEL 4" .62 BRG	1
28	TIRT9X3.50-4	TIRE, 9X3.50-4	1
29	TIRTU3.00-4	TUBE, 3.00-4	1
30	MSCVC-250-8	COVER, BLEEDER BLK	1




See Part WHLT-05 Steering Kit for Rudder Springs and Steering Arm Connection

If Base Does Not Have Two Bushings and Grease Fitting, See WHLTWBCNV Conversion Kit to Update to Current Configuration

Note: Alternate Wing Available to Provide Earlier Steering Release.

Release with Standard WHLT-03 = +- 45 Deg  
 Release with Optional WHLT-03A = +-25 Deg (May be Hand Ground to Release from 25 to 50 Deg)

TO SET PRELOAD IN VERTICAL AXLE #7: Be certain #3 & #5 Springs Are Installed. Seat Lower Nut #6 Fully & Insert Cotter Pin #8. Tighten Upper Nut #5 Slowly Until All Freeplay of Springs are removed and Fork #12 No Longer Rotates Freely. Loosen Upper Nut #6 1-4 Locking Features and Install Cotter Pin #8. Fork Should Rotate With Resistance Around Complete Rotation.

<b>MATCO mfg</b> 2361 S 1560 West Woods Cross, UT 84087 	NOMENCLATURE TAIL WHEEL, 8" PNEUMATIC WIDE	PART NUMBER WHLT-8W	SCALE 1:4	TOLERANCES (EXCEPT AS NOTED) DO NOT SCALE DRAWING LINEAR .XX = + .03 .XXX = + .01 ANGULAR + 1/2 CONCENTRIC + .01
	MATERIAL VARIOUS	DRAWING NO. TAIL/3D-T8W	REVISION B	Est Wt. (lb) 8.78
DRAWN BY George R. Happ	FINISH VARIES	DATE 11/10/2016	CHECKED BY SHEET 1 OF 1 SHEET SIZE A	