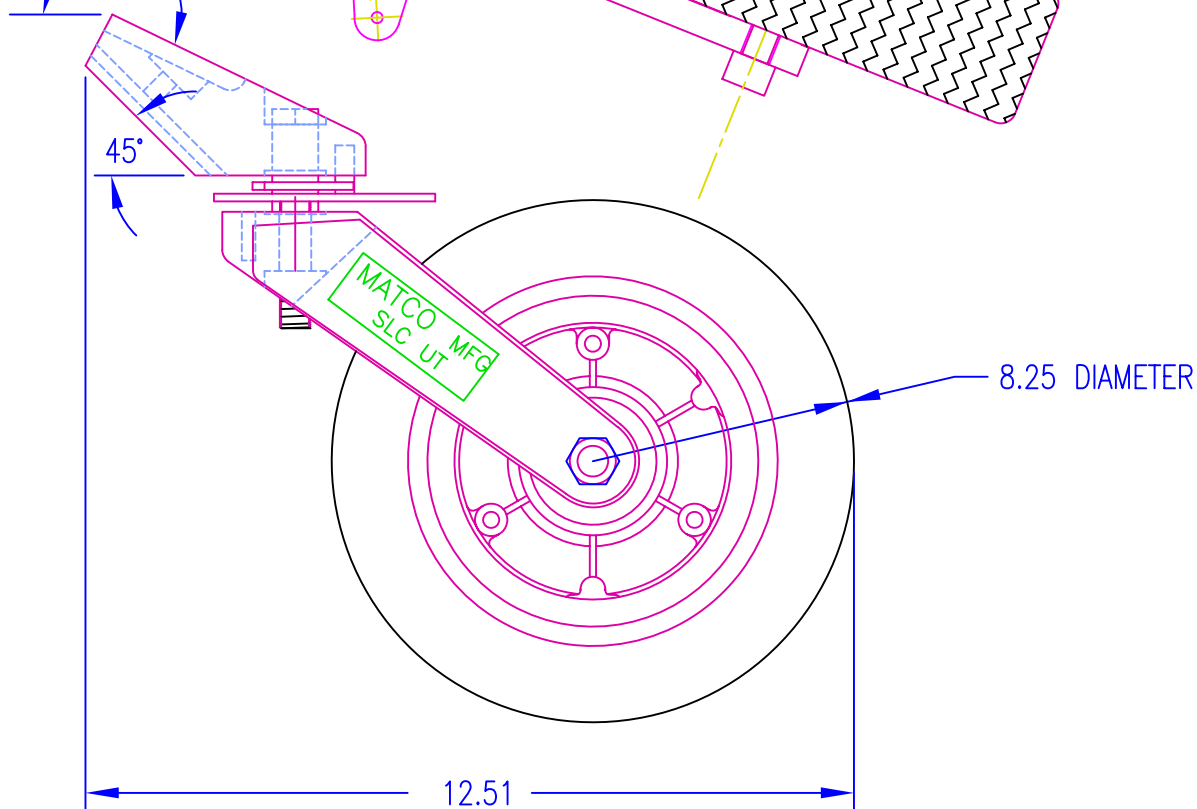
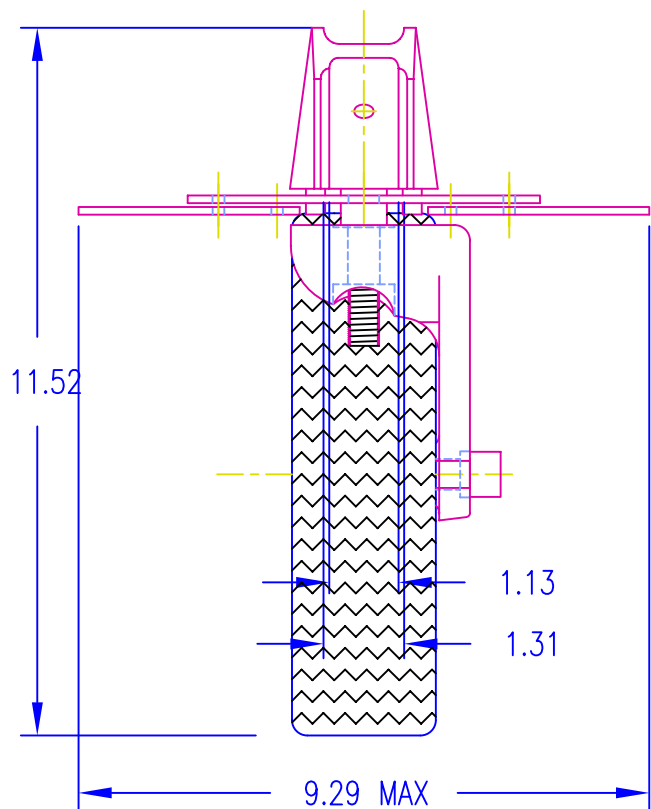
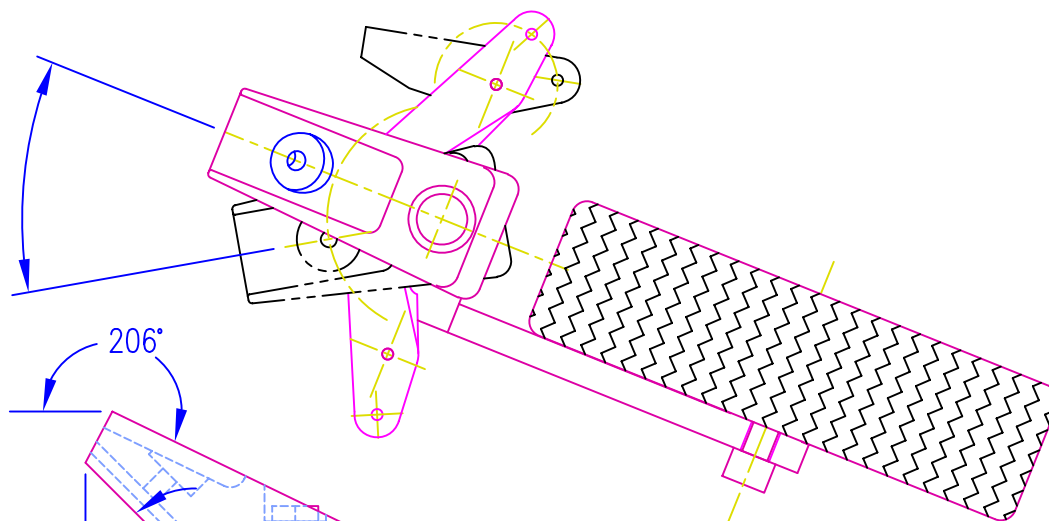


Release pin engage at 35°,
 full release 40°
 Alternate arm available for
 full release at 25°



MATCO mfg
 550W 3615 South
 SALT LAKE CITY, UT 84115 (801) 486-7574

PART NO.	T-8
MATERIAL	VARIOUS
DATE	SEPTEMBER 11, 1991
SCALE	1=3
FILENAME	C:\ACAD\TAIL\TWHEEL8